



GepaNet
<http://www.gepanet.com>

WatchGuard® System Manager (WSM) is a powerful, intuitive interface used to centrally manage WatchGuard security appliances. This includes firewall, VPN, intrusion prevention, URL filtering, web security, anti-virus and anti-spam services, and appliance software updates.

Whether you're a Managed Security Service Provider, novice network administrator of a small business, or seasoned IT professional with a large distributed network to manage, WSM has tools that streamline configuration and ongoing maintenance.

There are no additional modules to buy. Everything, even centralized logging and rich historical reporting, is included with the purchase of the appliance.

With WSM,
 network security
 configurations
 are **"very
 straightforward
 and easy to
 manage."**

Brian Cornell
 VP of Information Technology
 Concord Hospitality Enterprises



WatchGuard System Manager (WSM)



WSM provides the tools to effectively manage your organization's network security

EASY TO USE

- Manage one device or hundreds from one intuitive, Windows-based console for maximum efficiency.
- Use out-of-the-box templates and wizards to make setup easy and ongoing management straightforward.
- Shrink the time and effort needed to create centrally managed security configurations and branch office VPN tunnels – even those with dynamic IP addresses – using simple drag-and-drop setup. Three clicks and your remote office is connected.
- Validate security policies and make changes or adjustments, with instant feedback from interactive, real-time monitoring tools. A clear, visually driven interface and plain-language log messages keep the guesswork out of building and maintaining a strong security and compliance posture.

EFFICIENT

- Make one-touch configuration or firmware updates to all managed WatchGuard devices* to save time and ensure policies are synchronized across a distributed organization.
- Gain system-wide visibility with real-time monitoring to analyze network activity and take immediate corrective or preventive action without having to open separate configuration screens.
- Install all WSM components on a single PC for a complete solution on one workstation – with no need to deploy and maintain dedicated gateway appliances or third-party database software.
- Manage security subscriptions, including spamBlocker, WebBlocker, Gateway AV, Reputation Enabled Defense, and Intrusion Prevention Service, with no additional management or reporting software to purchase or maintain.
- Health monitoring for the WSM logging and reporting system helps minimize disruptions and maintain high service levels in these critical functions.
- Generate reports on all security activity using more than 50 predefined report templates or use our Web Services API with your favorite web report generation tool for fully customizable reporting.

FLEXIBLE

- Centrally manage multiple WatchGuard XTM and Firebox X appliances in real time or as a scheduled task.
- Delegate user privileges with Role-Based Access Control (RBAC), using pre-defined or custom roles.
- Edit policies online or offline, allowing for immediate, quick updates, or for an offline review and approval process. Different policies can be easily applied or modified, making quick work of troubleshooting, security customization, and compliance tasks.
- Complement WSM with the other components of the WatchGuard management tool suite, including the command line interface and web UI. All management tools work together to provide network administrators with the means to effectively control security at all times, in all situations.
- Logging and reporting functions can still be combined on a single server for simplicity, but MSSPs and larger organizations can take advantage of the ability to isolate the functions on a separate PC for high performance, scalability, and redundancy.
- For MSSPs and larger end user organizations that need to generate historical reports for customers or users, WSM provides a web-based, customizable reports portal designed to be hosted with direct Internet access for easy report selection and viewing.
- Available in your choice of these languages: English, Simplified Chinese, Japanese, French, or Latin Spanish.

UNDERSTANDABLE

- Rely on XML-based, human-readable logging that is easy to understand, allows integration with third party reporting tools, and is sent over a reliable, encrypted connection for security and continuity of log data.
- Full-featured reporting facilitates in-depth analysis of network activity, security threats, and user behaviors.

*WatchGuard System Manager works with all WatchGuard XTM and Firebox X e-Series appliances.



WSM Complements Other Management Tools

WatchGuard System Manager is one of three management environments for WatchGuard appliances running a Fireware XTM OS. Manage your installation entirely from WatchGuard System Manager, or take advantage of Fireware XTM's Web UI and Command Line Interface (CLI) for the utmost in flexibility.

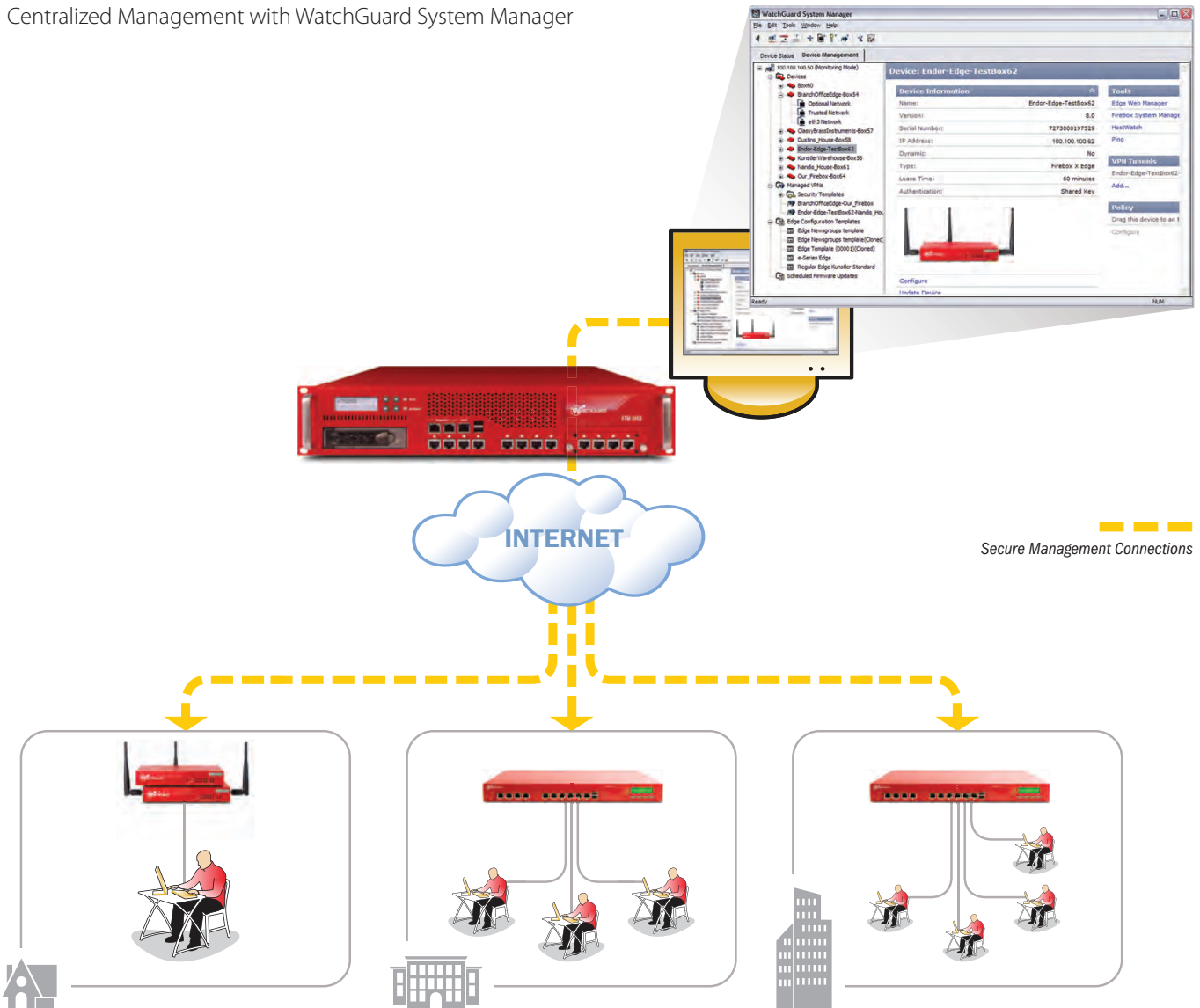
- The **Command Line Interface** can be used in conjunction with popular scripting tools to automate routine monitoring and maintenance tasks. For those who are more comfortable typing than clicking, it also provides a rich and responsive interface to make short work of appliance configuration.

- The **web UI** allows administrators to access the appliance from anywhere, anytime, without having to install management software. This UI is perfect for making spot checks and quick policy updates, and for fast troubleshooting.

LiveSecurity® Integration

WatchGuard® System Manager seamlessly integrates with LiveSecurity® Services, our comprehensive support and maintenance program, which provides up-to-the-minute vulnerability alerts and product notifications for all products. Customized LiveSecurity® data is displayed within the WSM interface, allowing administrators to better manage their environments.

Centralized Management with WatchGuard System Manager



WatchGuard System Manager works with all WatchGuard XTM and Firebox X e-Series appliances.

GepaNet, 88142 Wasserburg, Wiesenstraße 12 • www.gepanet.com/watchguard_system_manager.htm • +49 8382 9479825 • watchguard@gepanet.com

No express or implied warranties are provided for herein. All specifications are subject to change and expected future products, features, or functionality will be provided on an if and when available basis. ©2010 WatchGuard Technologies, Inc. All rights reserved. WatchGuard, the WatchGuard logo, Firebox, and LiveSecurity are either trademarks or registered trademarks of WatchGuard Technologies, Inc. in the United States and/or other countries. All other tradenames are the property of their respective owners. Part No. WGC66646_060910